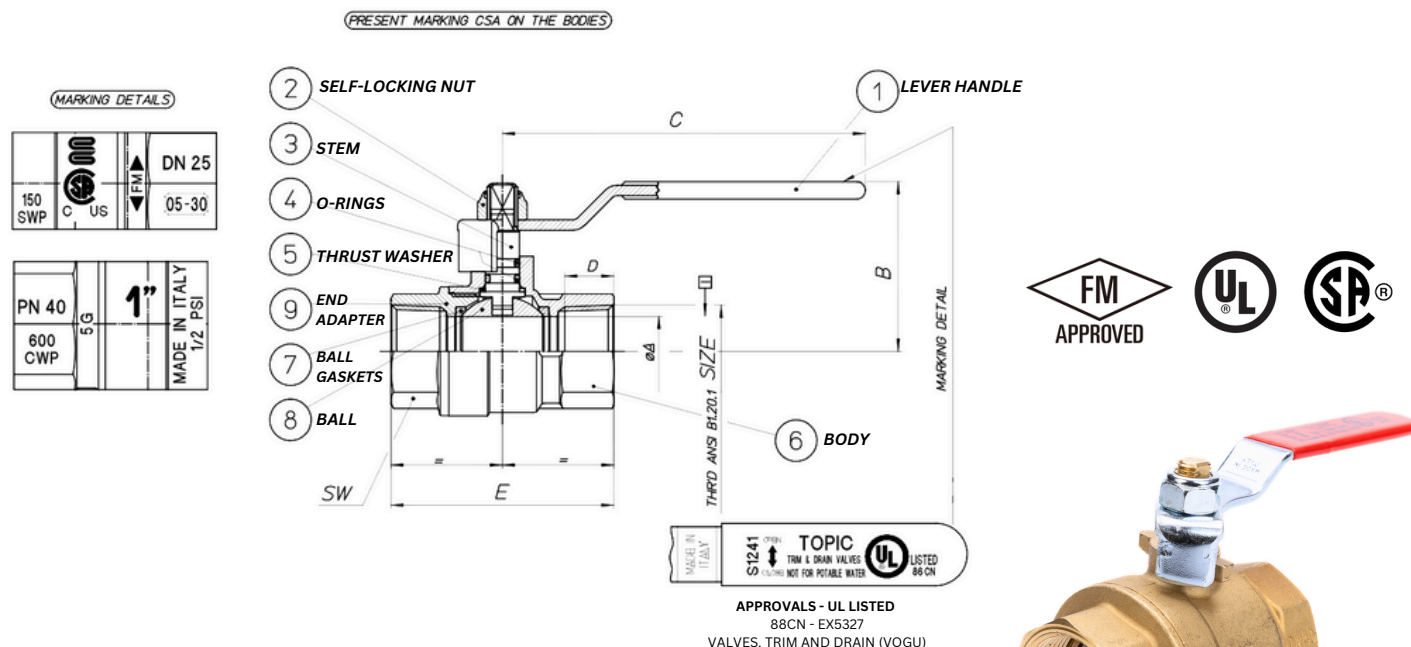


12950 SERIES BRASS BALL VALVE FEMALE X FEMALE THREADED NPT WITH RED LEVER



SPECIFICATION

SANDBLASTED BRASS BODY

SIZES: 1/4" - 4"

CONNECTION: FEMALE X FEMALE NPT

ANSI B 1.20.1 STANDARD

90° LEVER ROTATION

RED LEVER

PRESSURE:

928 PSI FOR 1/4" - 3/8"

580 PSI FOR 1/2" - 2"

362 PSI FOR 2-1/2" - 4"

TEMPERATURE LIMITS: -4° F TO 140° F FOR GAS APPLICATIONS. -4° F TO 266° F FOR ALL OTHER.

APPLICATIONS: HOT AND COLD WATER, COMPRESSED AIR, OILS, ALL KINDS OF GASES, NON-AGGRESSIVE FLUIDS

THREADED ENDS: NPT ANSI B1.20.1

DIRECTION OF FLOW: IN BOTH WAY

MADE IN ITALY

COMPONENTS

N°	DESCRIPTION	MATERIAL
1	LEVER HANDLE	STEEL
2	SELF-LOCKING NUT	STEEL C8
3	STEM	CW614
4	O-RINGS	VITON+NBR
5	THRUST WASHER	PTSE
6	BODY	CW617
7	BALL GASKETS	PTSE
8	BALL	CW617
9	END ADAPTER	CW617

DIMENSIONS

CODE	SIZE	DN	ØA	B	C	D	E	SW	PN	KPA ^⑤	PSI
12950-002	1/4"	0.315	0.315	1.496	3.543	0.398	1.713	0.67	64	6400	900
12950-003	3/8"	2.54	2.54	1.496	3.543	0.417	1.772	0.827	64	6400	900
12950-005	1/2"	0.59	0.59	1.614	3.543	0.579	2.303	0.984	40	4000	600
12950-007	3/4"	0.787	0.787	1.949	4.134	0.559	2.539	1.220	40	4000	600
12950-010	1"	0.984	0.984	2.027	4.134	0.661	3.051	1.496	40	4000	600
12950-012	1-1/4"	1.26	1.26	2.441	5.512	0.681	3.524	1.85	40	4000	600
12950-015	1-1/2"	1.574	1.574	2.795	5.512	0.681	3.819	2.126	40	4000	600
12950-020	2"	1.968	1.968	3.366	6.693	0.697	4.39	2.598	40	4000	600
12950-025	2-1/2"	2.56	2.56	3.917	6.693	0.937	5.551	3.268	30	3000	450
12950-030	3"	3.15	3.15	4.45	9.842	1.016	6.398	3.819	30	3000	450
12950-040	4"	3.937	3.937	5.472	9.842	1.094	7.56	4.882	30	3000	450