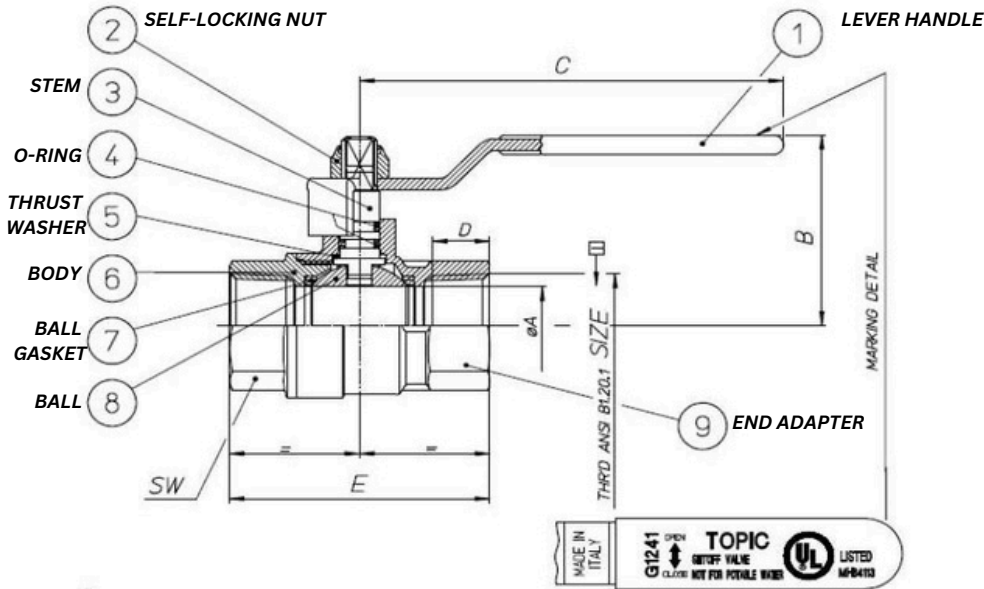


## 12410 SERIES

### FORGED BRASS BALL VALVE FEMALE/FEMALE NPT WITH STEEL YELLOW LEVER



#### SPECIFICATION

SANDBLASTED BRASS BODY WITH STEEL LEVER

SIZES: 1/4" - 4"

CONNECTION: FEMALE NPT X NPT

PRESSURE:

900 PSI (1/4" - 5/8")

600 PSI (1/2" - 1")

350 PSI (1-1/4" - 4")

ANSI STANDARD B1.20.1

CSA 9.1:21 FROM 1/4" TO 2"

TEMPERATURE: -4° F TO 266° F

APPLICATION: HOT AND COLD WATER, COMPRESSED AIR, OILS, ALL KINDS OF GASES, NON-AGGRESSIVE FLUIDS

DIRECTION OF FLOW: IN BOTH WAY

**MADE IN ITALY**

#### COMPONENTS

N°	DESCRIPTION	MATERIAL
1	LEVER HANDLE	STEEL
2	SELF-LOCKING NUT	STEEL
3	STEM	CW614N
4	O-RING	FKM
5	THRUST WASHER	PTFE
6	BODY	CW617N
7	BALL GASKET	PTFE
8	BALL	CW617N
9	END ADAPTER	CW617N

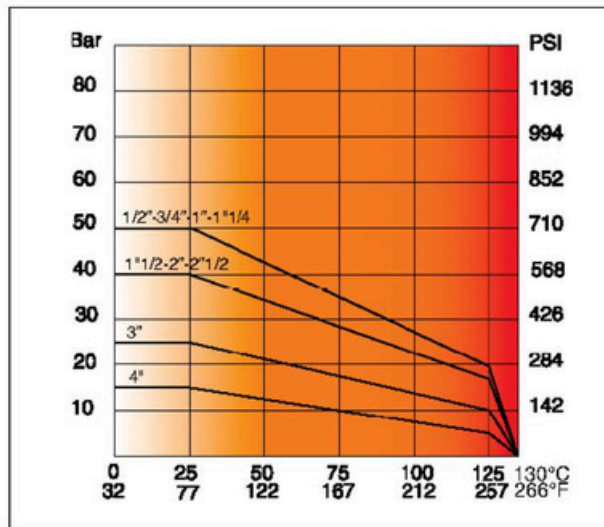
#### DIMENSIONS

CODE	SIZE	ØA (DN mm)	B	C	D	E	SW	PN	PSI	CV	INCHES
12410-002	1/4"	0.315 (8mm)	1.496	3.543	0.398	1.713	0.67	64	900	7	
12410-003	3/8"	2.54 (10mm)	1.496	3.543	0.417	1.772	0.827	64	900	9.3	
12410-005	1/2"	0.59 (15mm)	1.614	3.543	0.579	2.303	0.984	40	600	17.4	
12410-007	3/4"	0.787 (20mm)	1.949	4.134	0.559	2.539	1.22	40	600	34.8	
12410-010	1"	0.984 (25mm)	2.027	4.134	0.661	3.051	1.496	40	600	47	
12410-012	1-1/4"	1.26 (32mm)	2.441	5.512	0.681	3.524	1.85	40	350	69.6	
12410-015	1-1/2"	1.574 (40mm)	2.795	5.512	0.681	3.819	2.126	40	350	116	
12410-020	2"	1.968 (50mm)	3.366	6.693	0.697	4.39	2.598	40	350	290	
12410-025	2-1/2"	2.56(65mm)	3.917	6.693	0.937	5.551	3.268	40	230	559	
12410-030	3"	3.15(80mm)	4.45	9.842	1.016	6.398	3.819	25	230	934	
12410-040	4"	3.397(100mm)	5.472	9.842	1.094	7.56	4.882	16	230	1360	

## 12410 SERIES

FORGED BRASS BALL VALVE FEMALE/FEMALE NPF WITH STEEL YELLOW LEVER

### BAR/TEMPERATURE DIAGRAM (TESTED WITH WATER)



### LOSS OF HEAD DIAGRAM

