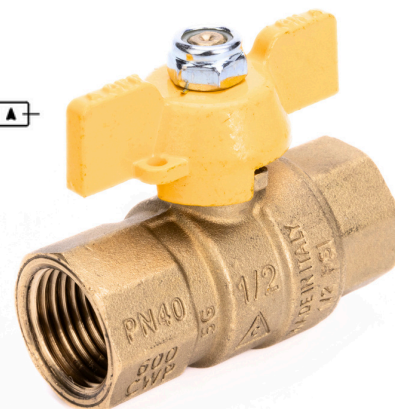
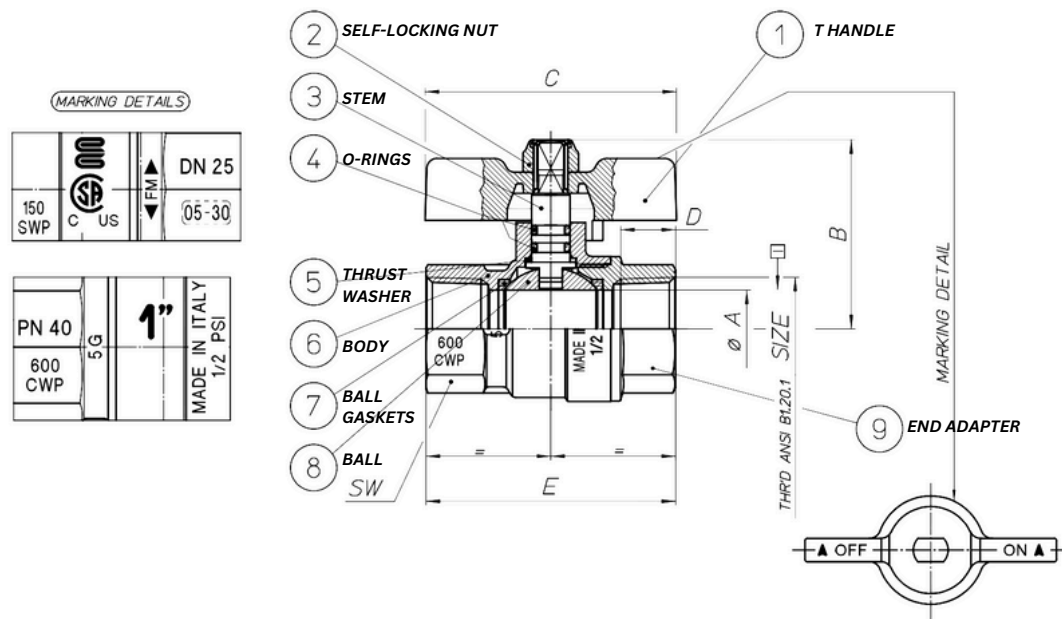


12960 SERIES

BRASS BALL VALVE FEMALE X FEMALE THREADED NPT WITH YELLOW HANDLE



MADE IN ITALY

SPECIFICATION

SANDBLASTED BRASS BODY

SIZES: 1/4" - 1"

CONNECTION: FEMALE X FEMALE NPT

CSA CERTIFIED

ANSI B1.20.1 STANDARD

90° BALL ROTATION

YELLOW HANDLE

PRESSURE: 928 PSI FOR 3/8"

580 PSI FOR 3/4" TO 1"

928 PSI FOR 3/8" TO 1/4"

TEMPERATURE LIMITS: 4° F TO 140° F FOR GAS

APPLICATION; -4° F TO 266° FOR ALL OTHER

APPLICATIONS

APPLICATION: HOT AND COLD WATER, COMPRESSED

AIR, OILS, ALL KINDS OF GASES, NON-AGGRESSIVE

FLUIDS

DIRECTION OF FLOW: IN BOTH WAYS

COMPONENTS

N°	DESCRIPTION	MATERIAL
1	T-HANDLE	ALUMINUM
2	SELF-LOCKING NUT	STEEL C8
3	STEM	CW614
4	O-RINGS	VITON+NBR
5	THRUST WASHER	PTSE
6	BODY	CW617
7	BALL GASKETS	PTSE
8	BALL	CW614
9	END ADAPTER	CW614

DIMENSIONS

CODE	SIZE	DN	ØA	B	C	D	E	SW	PN	KPA [©]
12960-002	1/4"	0.315	0.39	1.417	2.047	0.38	1.712	17	64	6400
12960-003	3/8"	0.39	0.39	1.417	2.047	0.417	1.772	21	64	6400
12960-005	1/2"	0.59	0.59	1.52	2.047	0.579	2.303	25	40	4000
12960-007	3/4"	0.79	0.79	1.93	2.56	0.559	2.539	31	40	4000
12960-010	1"	0.98	0.98	2.09	2.56	0.66	3.052	38	40	4000